

CHARMILL

RESIDENTIAL



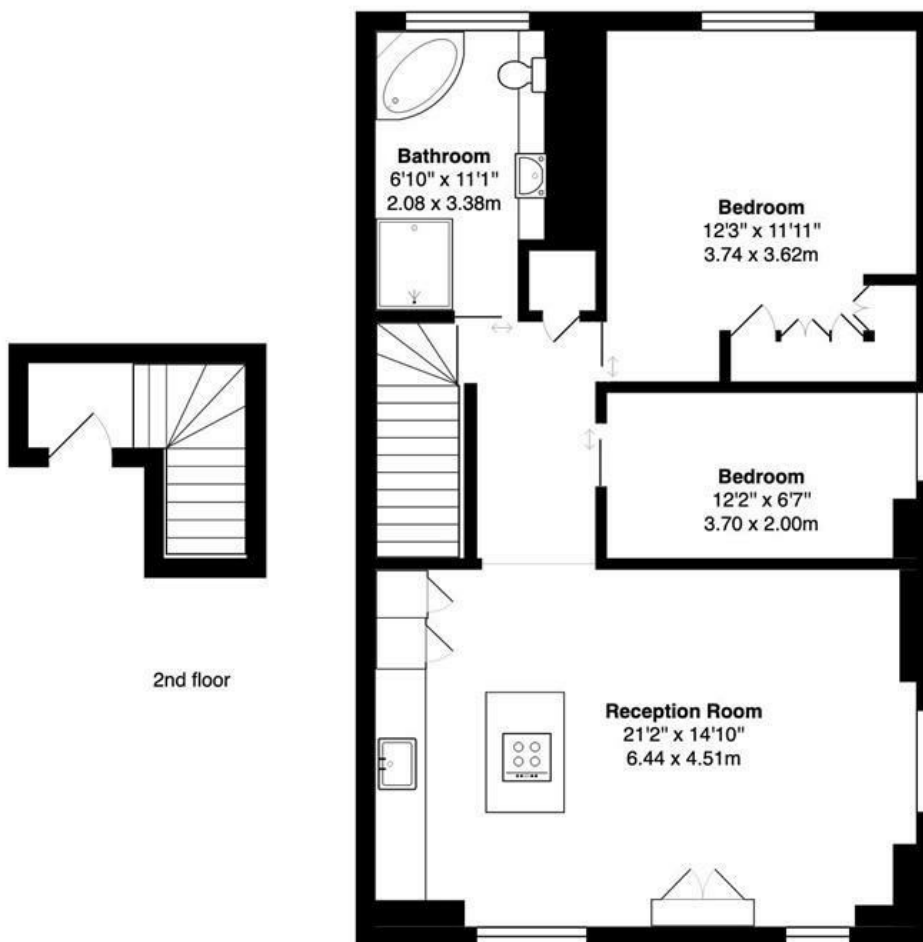
Clifton Gardens, Little Venice W9

Entered on the second floor and occupying the entire third floor of a prestigious semi-detached white stucco-fronted period building located in the heart of Little Venice is this beautiful two bedroom apartment. This stunning property which has been meticulously and tastefully interior designed to an exceptionally high standard throughout comprises an open plan German-built bespoke kitchen/reception room which is dual aspect allowing an abundance of natural light to flood through, two double bedrooms with fitted wardrobes in the principal bedroom and a luxurious bathroom complete with a walk-in wet room and designer egg-shell bath. The apartment further benefits from sound proof flooring throughout, ample storage space and use of the sought-after and gorgeous Triangle communal garden.

Clifton Gardens is superbly positioned moments from Regents Canal and the shops, restaurants and cafes on Clifton Road. Warwick Avenue station (Bakerloo line) is a short stroll away and Paddington station is also within easy reach, offering Circle, District, Bakerloo and Hammersmith & City lines together with National Rail services and the Heathrow Express providing access to Heathrow Airport in 15 minutes.

- Open plan kitchen/reception room
- Two double bedrooms
- Family bathroom
- Communal gardens

£866



2nd floor

3rd floor

Clifton Gardens, Little Venice W9

Total Gross Area: 809 ft² ... 75.1 m²

All measurements are approximate and for identification guideline purposes only, not to scale.
Compliant with the RICS code of measuring practice

